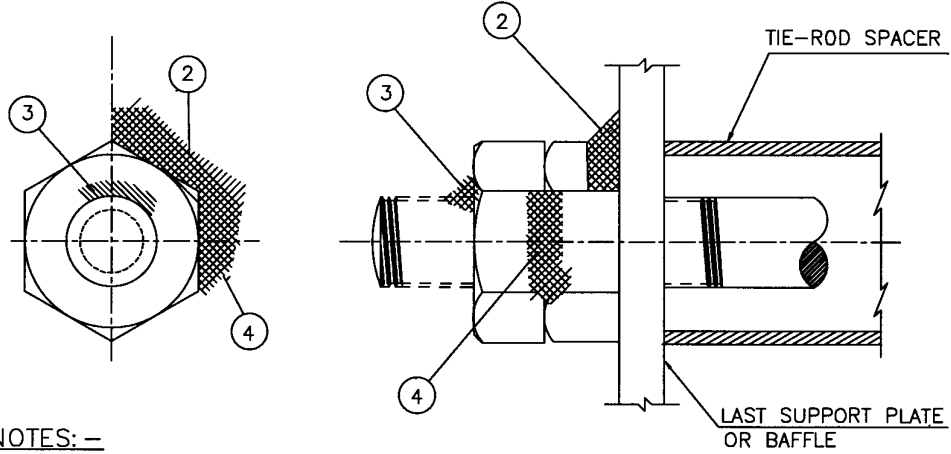


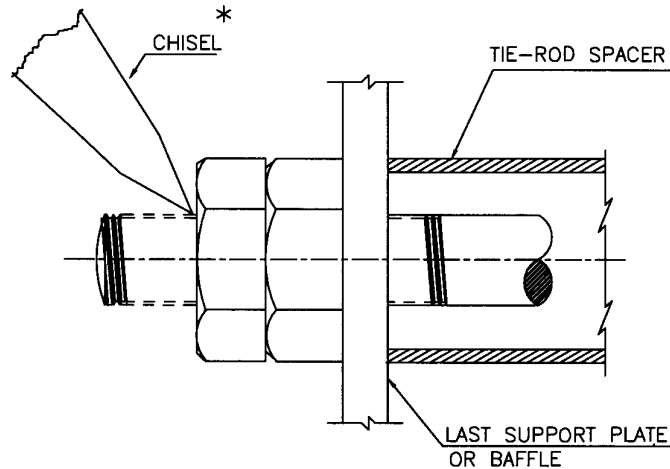
STEEL TIE-ROD



NOTES: -

1. ALL DIMENSIONS ARE IN mm. UNLESS STATED OTHERWISE.
2. WELD 1st NUT TO SUPPORT PLATE
3. WELD 2nd NUT TO TIE-ROD
4. WELD BOTH NUTS TOGETHER
5. ALL WELDS TO EXTEND THE LENGTH OF ONE FLAT OF NUT.

NON FERROUS TIE-ROD



NOTE: -

- \* BREAK THREAD OF TIE-ROD IN TWO PLACES NEAR LAST NUT WITH BLUNT CHISEL TO LOCK TIE-ROD NUTS IN PLACE.

Rev No	Date	Purpose	Prepared by	Checked by	Sds Committee Convener	Sds Bureau Chairman
5	31.10.19	REAFFIRMED AND REISSUED AS STANDARD	DP	NSK	KJH	RKT
4	06.05.14	REAFFIRMED AND REISSUED AS STANDARD	GCP	KA	RKT	SC

Approved by