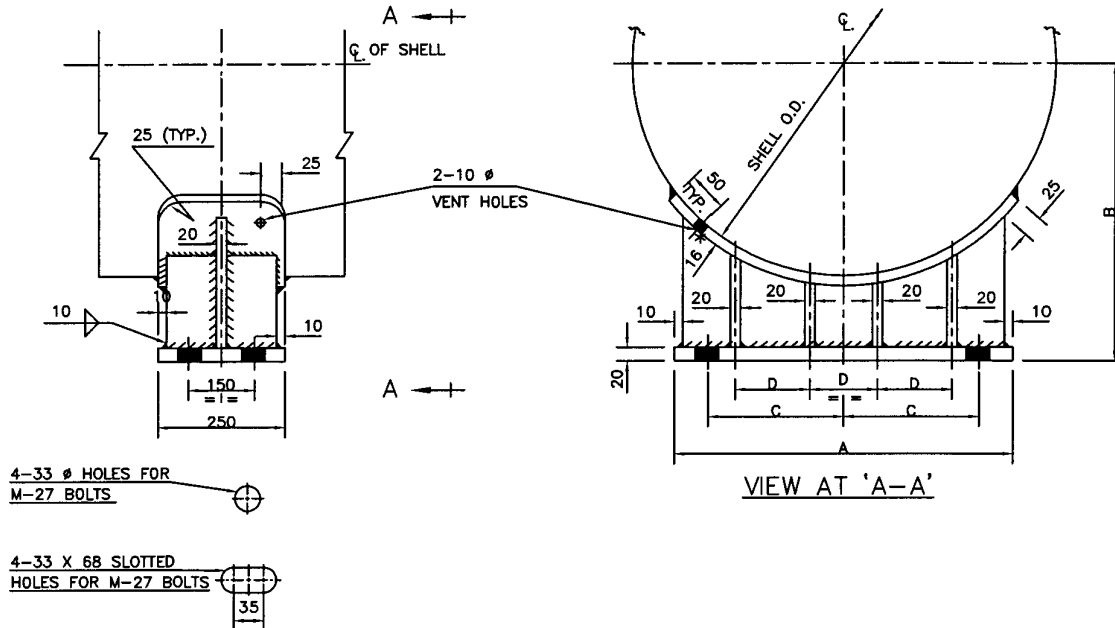


SADDLE NO.	UNIT SIZE O.D. mm	A	B	C	D	NO. OF RIBS	TOTAL WT. OF 2 SADDLES (kg.)	REMARKS
1	168.3	160	200	50	-	1	17	
2	219.1	160	230	50	-	1	18	
3	273	220	260	70	-	1	21	
4	323.8	230	270	75	-	1	22	
5	355.6	260	280	90	-	1	26	
6	406.4	300	310	110	-	1	30	
7	457.2	350	330	135	80	2	36	
8	500	400	350	160	105	3	44	
9	550	400	380	160	105	3	44	
10	600	430	400	175	120	3	46	
11	650	460	430	190	135	3	50	
12	700	510	450	215	160	3	56	
13	750	530	480	225	165	3	60	
14	800	590	500	240	180	3	82	
15	850	610	530	255	195	3	84	
16	900	660	550	280	220	3	92	
17	950	690	580	295	235	3	98	

NOTES: -

1. ALL DIMENSIONS ARE IN mm UNLESS STATED OTHERWISE.
2. INTERMEDIATE SADDLES TO BE TAKEN TO THE NEAREST SIZE.
- \* 3. FOR S.S. 10 mm THK. FOR SADDLE NOS. 1 TO 17 & 14 mm THK. FOR SADDLE NOS. 18 TO 37.

4	06.05.14	REAFFIRMED AND REISSUED AS STANDARD	GCP	KA	RK	SC
3	27.01.09	REAFFIRMED AND REISSUED AS STANDARD	VPR	RKG	AKM	VC
Rev. No.	Date	Purpose	Prepared by	Checked by	Stds. Committee Convener	Stds. Bureau Chairman
						Approved by



SADDLE NO.	UNIT SIZE O.D. mm	A	B	C	D	NO. OF RIBS	TOTAL WT. OF TWO SADDLES (kg)	REMARKS
18	1000	900	650	370	180	8	258	
19	1050	950	675	390	200		278	
20	1100	1000	700	420	220		290	
21	1150	1050	725	440	230		302	
22	1200	1100	750	470	250		320	
23	1250	1150	775	490	270		336	
24	1300	1200	800	520	280		348	
25	1350	1200	825	520	280		356	
26	1400	1250	850	540	300		368	
27	1450	1300	875	570	320		380	
28	1500	1350	900	590	340		398	
29	1600	1400	950	620	350		406	
30	1700	1500	1000	670	380		440	
31	1800	1600	1050	720	420		472	
32	1900	1700	1100	770	450		516	
33	2000	1800	1150	820	480		546	
34	2100	1850	1200	840	500		568	
35	2200	1950	1250	890	530		602	
36	2300	2000	1300	920	550		606	
37	2400	2100	1350	970	580		640	

4	06.05.14	REAFFIRMED AND REISSUED AS STANDARD	GCP	RKT	SC	
3	27.01.09	REAFFIRMED AND REISSUED AS STANDARD	VPR	RKG	VC	
Rev. No.	Date	Purpose	Prepared by	Checked by	Stds. Committee Convener	Stds. Bureau Chairman
					Approved by	
Format No. 8-00-0001-F4 Rev.0						
Copyright EIL - All rights reserved						