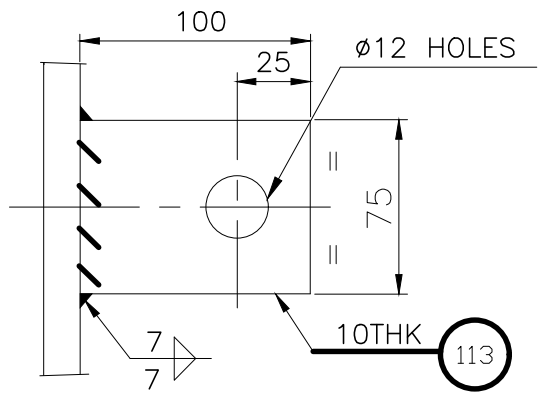
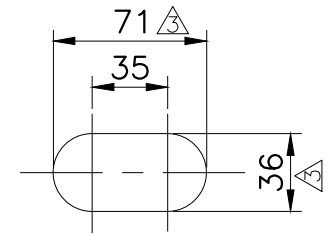


NOTE:-
ALL FILLETS ARE 14mm. \triangle



**SLIDING SADDLE SUPPORT DETAILS
FOR CHANNEL SHELL SIDE**



DRAWING CERTIFIED BY
Harry R. Bishop 02/17/03
HARRY R. BISHOP
CHIEF DESIGN ENGINEER

4	02/17/03	AS BUILT DIMENSIONS ARE SHOWN IN BKT (-) & OTHER REVISED AS MKD. \triangle THUS	DMF	WB	HRB
3	04/19/02	DWG. IS REVISED AS MKD. \triangle THUS	DMF	WB	HRB
2	04/03/02	DWG. IS REVISED AS MKD. \triangle THUS	DMF	WB	HRB
1	03/13/02	DWG. IS REVISED AS MKD. \triangle THUS	DMF	WB	HRB
REV.	DATE	DESCRIPTION	DRWN	CHKD	APPD
PROJECT NAME : CPCL REFINERY- III PROJECT					
MANUFACTURER : TEMA INDIA LTD <small>Factory: Ashhad Village, Dist. Thane, & Kharadi, Shree Grom COOP/CPCL, Mumbai 40</small>					
ENGINEERING : Struthers STRUTHERS INDUSTRIES, INC. GULFPORT, MISSISSIPPI					
CONSULTANT : ENGINEERS INDIA LIMITED					
CLIENT : CHENNAI PETROLEUM CORPORATION LIMITED					
TITLE : SLIDING SADDLE SUPPORT DETAILS OF CHANNEL SHELL SIDE FOR REACTOR EFFLUENT / RECYCLE GAS					EQPT. NO. 207-E7
JOB NO.	SII TEMA	3-02-04-41206E T/E/02520	P/O No.	1027/PO/2138/4814	
SCALE	NTS	DWG. No. or Doc No.	VP-1027-E7-02520	SHT. NO. 14 OF 19	Rev. 1 2 3 4