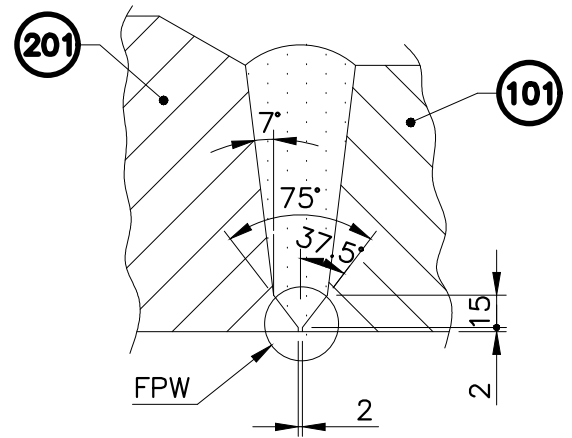
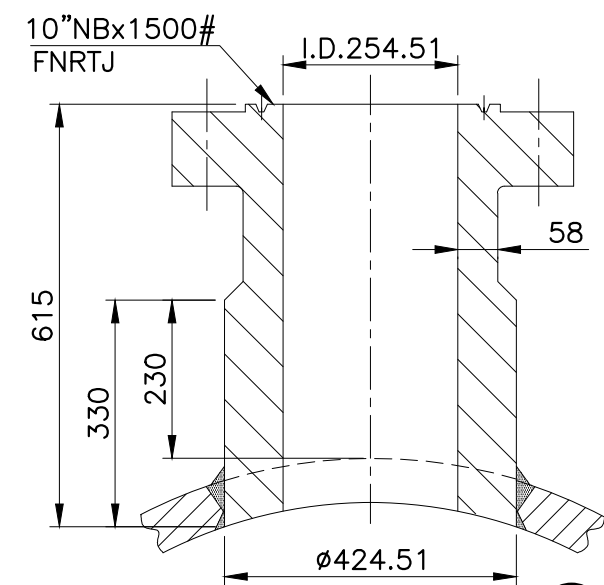


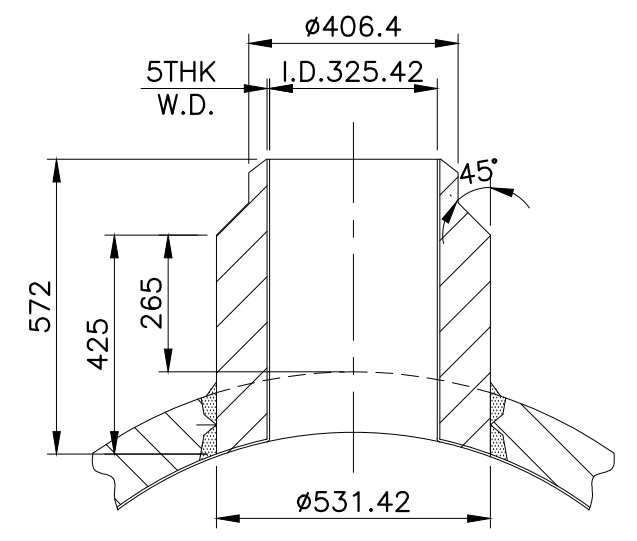
**DETAIL OF C/S & L/S WELD FOR MAIN SHELL**



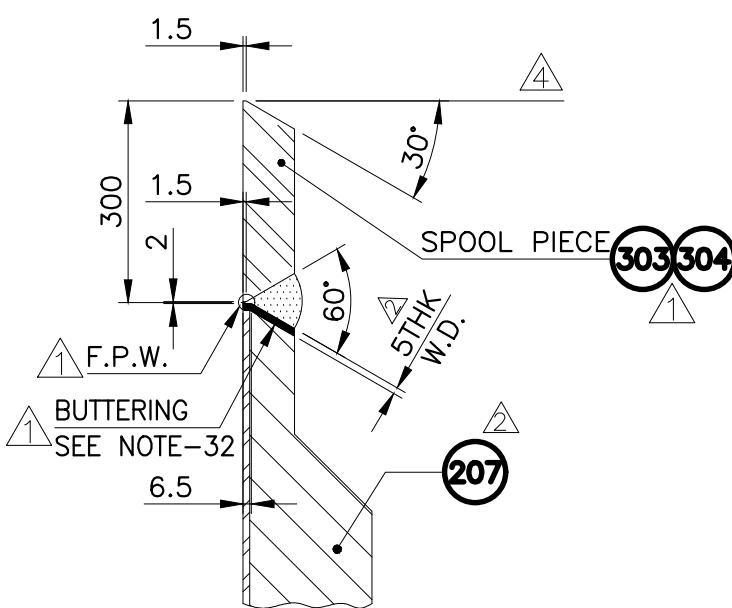
**DETAIL OF SHELL FLG. TO SHELL WELD**



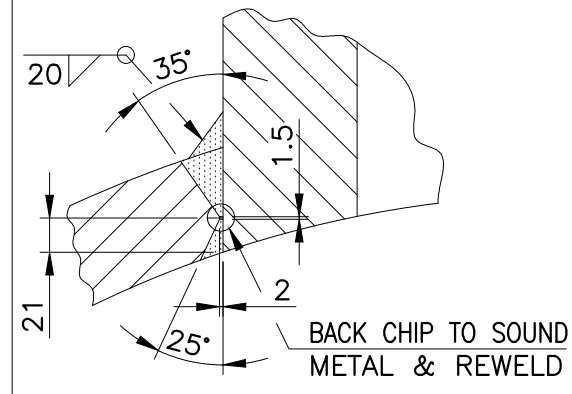
**DETAIL OF NOZ. S1 & S2**



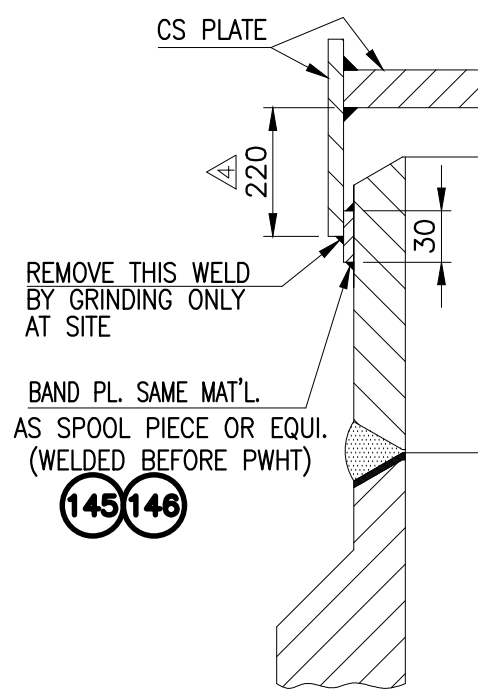
**DETAIL OF NOZ. T1 & T2**



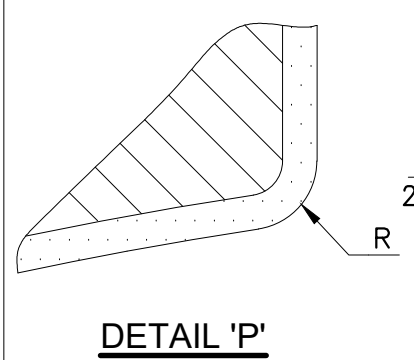
**TYP WELD DETAIL OF NOZZLE NECK TO SPOOL PIECE (FOR NOZZ. T1 & T2)**



**DETAIL OF FORG. NECK TO SHELL WELD**

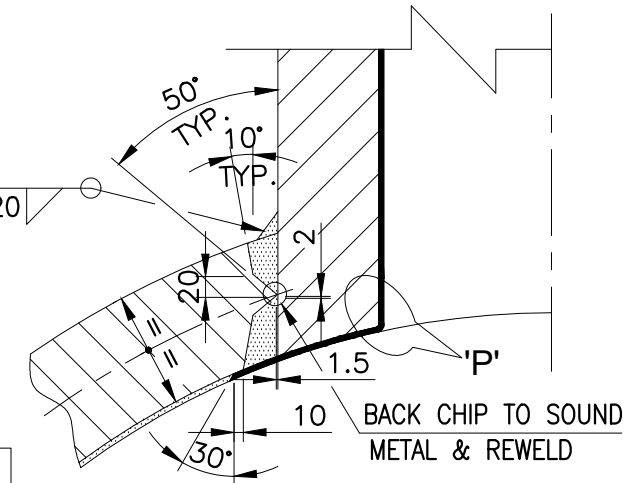


**HYDROTEST & NITROGEN FILLING ARRANGEMENT (FOR NOZZ. T1 & T2)**

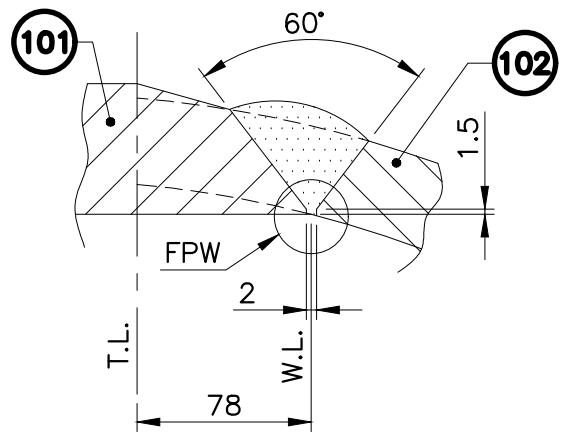


**DETAIL 'P'**

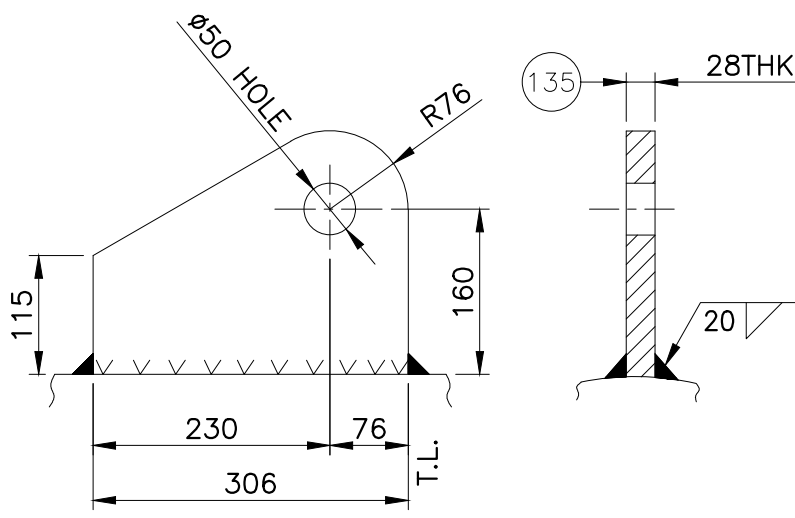
DRAWING CERTIFIED BY  
*Harry R. Bishop* 05/26/03  
 HARRY R. BISHOP  
 CHIEF DESIGN ENGINEER



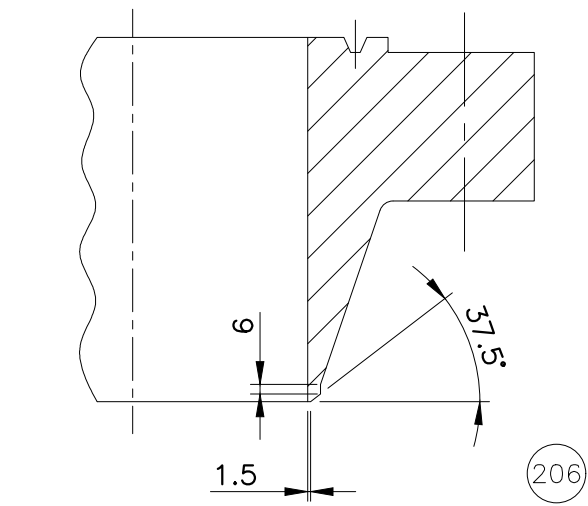
**DETAIL OF FORG. NECK TO CHANNEL DRUM WELD**



**DETAIL OF SHELL & HEMI. HEAD WELD**



**PULLING LUG DETAIL**



**COMPANION FLG. FOR S1 & S2**

REV.	DATE	DESCRIPTION	DRWN	CHKD	APPD
5	05/26/03	AS BUILT DIMENSIONS ARE SHOWN IN BKT (-) & OTHER REVISED AS MKD. THUS	DMF	WB	HRB
4	10/10/02	DWG IS REVISED AS MKD. THUS	DMF	WB	HRB
3	04/17/02	DWG IS REVISED AS MKD. THUS	DMF	WB	HRB

PROJECT NAME : **CPCL REFINERY- III PROJECT**

MANUFACTURER : **"AS BUILT DWG"** **TEMA INDIA LTD**  
Factory: Achhad Village, Dist. Thane, & Kherdi, Silvassa Gram: COORNESEI, Mumbai 88.

ENGINEERING : **STRUTHERS INDUSTRIES, INC. GULFPORT, MISSISSIPPI**

CONSULTANT : **ENGINEERS INDIA LIMITED**

CLIENT : **CHENNAI PETROLEUM CORPORATION LIMITED**

TITLE : **DETAIL OF WELD JOINTS & FORGE NECK FOR RX EFFLUENT / CLPS LIQUID** EQPT. NO. **207-E4**

JOB NO.	SII	3-02-04-41206B	P/O No.	1027/PO/2138/4814
	TEMA	T/E/02517		
SCALE	NTS	DWG. No. or Doc No.	VP-1027-E4-02517	SHT. NO. 16 OF 18
				Rev. 2/3/4/5