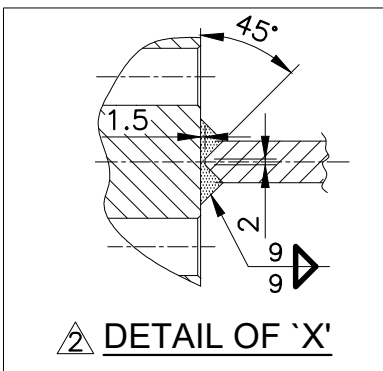


DETAIL OF LONGITUDINAL BAFFLE SCALE = 1:16

DETAIL OF LIFTING DEVICE (FOR CHANNEL COVER)

SCALE = NTS



DETAIL OF 'X'

DRAWING CERTIFIED BY
Harry R. Bishop 05/26/03
HARRY R. BISHOP
CHIEF DESIGN ENGINEER

"AS BUILT DWG"

REV.	DATE	DESCRIPTION	DRWN	CHKD	APPD
5	05/26/03	AS BUILT DIMENSIONS ARE SHOWN IN BKT (-) & OTHER REVISED AS MKD. THIS	DMF	WB	HRB
4	05/02/02	DWG IS REVISED AS MKD. THIS	DMF	WB	HRB
3	04/17/02	DWG IS REVISED AS MKD. THIS	DMF	WB	HRB

PROJECT NAME : **CPCL REFINERY- III PROJECT**

MANUFACTURER : **TEMA INDIA LTD**
Factory: Achhad Village, Dist. Thane, & Kherdi, Silvasa Gram: CODEVESEL Mumbai 88.

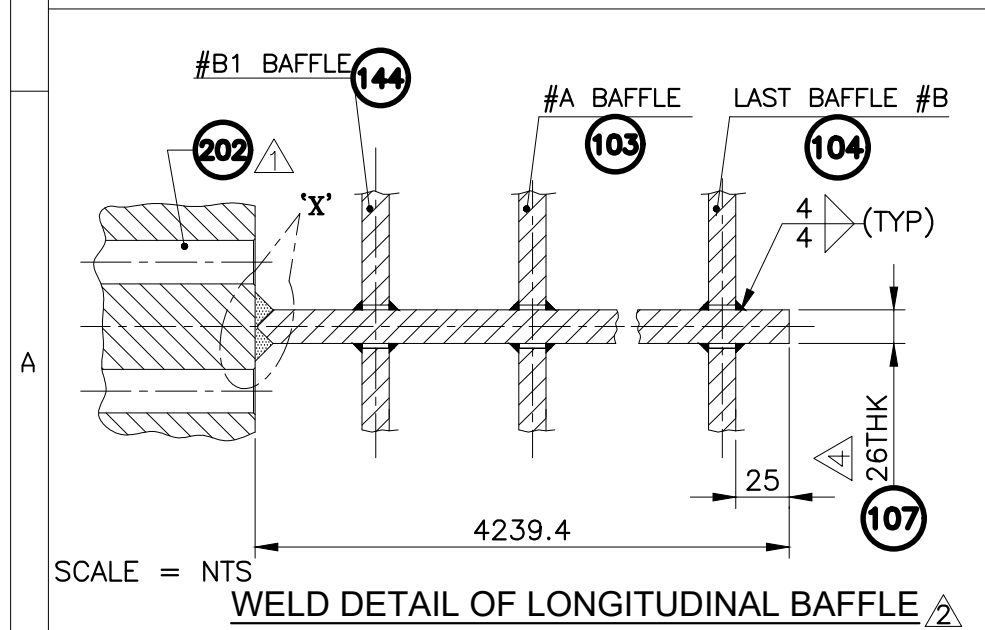
ENGINEERING : **Struthers STRUTHERS INDUSTRIES, INC. GULFPORT, MISSISSIPPI**

CONSULTANT : **ENGINEERS INDIA LIMITED**

CLIENT : **CHENNAI PETROLEUM CORPORATION LIMITED**

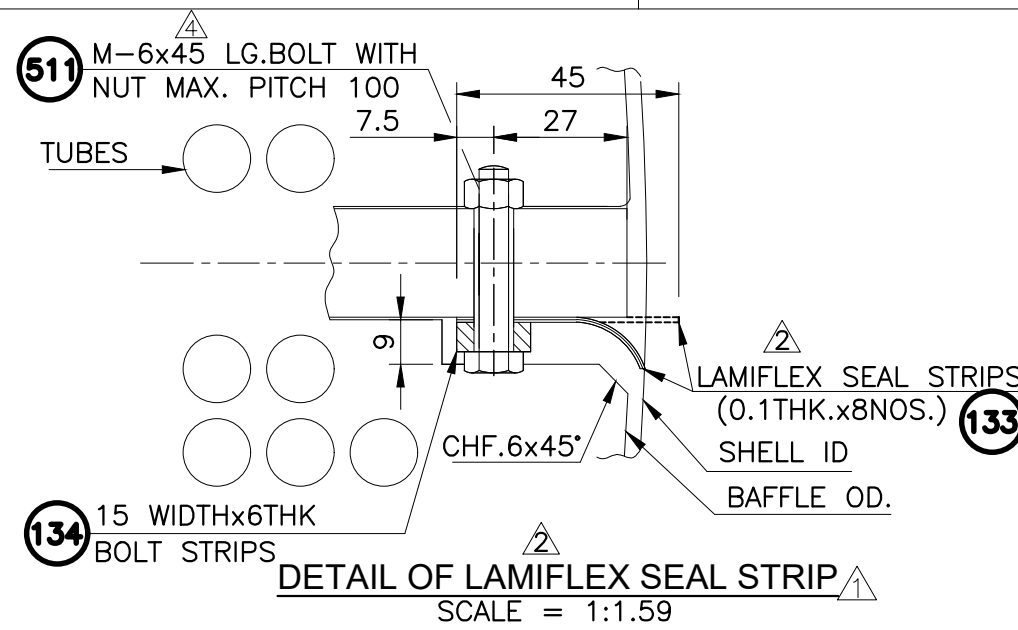
TITLE : **DETAIL OF LIFTING DEVICE & LONG BAFFLE RX EFFLUENT / CLPS LIQUID** EQPT. NO. **207-E4**

JOB NO.	SII	3-02-04-41206B	P/O No.	1027/PO/2138/4814
	TEMA	T/E/02517		
SCALE	AS SHOWN	DWG. No. or Doc No.	VP-1027-E4-02517	SHT. NO. 14 OF 18
				Rev. 2 3 4 5



WELD DETAIL OF LONGITUDINAL BAFFLE

SCALE = NTS



DETAIL OF LAMIFLEX SEAL STRIP

SCALE = 1:1.59